



EPHES



# EPHES

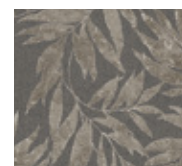
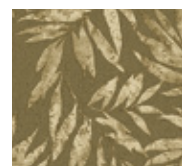
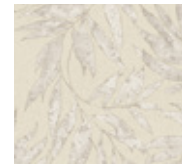
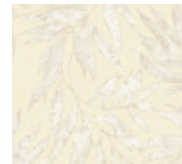
**NON-WOVEN BACK**  
**1.06 M X 10M**

**TR** Efsaneye göre, İmparatoriçe His Ling Shi bir gün dut ağacının altında çayını yudumlarken, bu sırada bir koza fincanına düşerek çözülmeye başladı. İmparatoriçe, çözülen ve parlayan ipliklere öylesine hayran kaldı ki, sonrasında iplik eğirme makinesi ve dokuma tezgahını icat etti. Böylece hala arzusunun kumaşı olarak bilinen lüks ipek keşfedildi. AdaWall'un Ephes koleksiyonu, sizi klasik ve zarafetin sonsuz denizinde kaybolmaya davet ediyor. Modernizmin Ephes'ten gelen antikalarla nasıl buluştuğu hikayesini duymaya hazır olun; duvarlarınız tarihle dolacak. Ephes Koleksiyonu, neo-klasik ve geleneksel tasarımlar arasında mükemmel bir uyum ve simetrik oranlar sağlayarak hem çekici hem de etkileyici bir görünüm sunar. İpek efsanesi gibi, Ephes de benzersiz ama arzu edilir bir şey keşfetmenizi sağlıyor.

**EN** According to legend, one day Empress His Ling Shi was sipping tea under a mulberry tree when a cocoon fell into her cup and began to unravel. The Empress was so amazed by the unraveling and shining threads that she invented the spinning machine and the loom. Thus, the luxurious silk was discovered which still known as the fabric of desire. AdaWall's Ephes collection invites you to get lost in an endless sea of classic and elegance. Be ready to hear the story of how modernism meets with antiques from Ephes; your walls will have history beneath them. The Ephes Collection offers a perfect balance and symmetrical proportions between neo-classical and traditional designs, delivering both an attractive and impressive appearance. Like the silk legend, Ephes helps you discover something unique yet desirable.

**RU** Легенда гласит, что однажды, когда императрица Хис Лин Ши потягивала чай под тутовым деревом, он начал растворяться, упав в чашку с коконом. Императрица была настолько очарована нитями, которые распутывались и блестели, что впоследствии изобрела прядильную машину и ткацкий станок. Таким образом, был обнаружен роскошный шелк, который до сих пор известен как ткань желаний. Коллекция Ephes от AdaWall приглашает вас погрузиться в бесконечное море классики и элегантности. Приготовьтесь услышать историю о том, как модернизм встретился с древностями Эфеса; ваши стены будут наполнены историей. Коллекция Ephes предлагает привлекательный и впечатляющий вид, обеспечивая идеальную декор и симметричные пропорции между неоклассическим и традиционным дизайном. Как и легенда о шелке, Эфес АМІ позволяет вам открыть для себя что-то уникальное, но желанное.

1012 SERIE

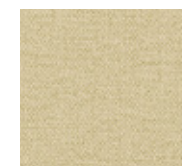
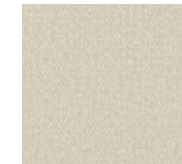
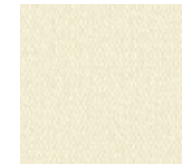


1012-1

1012-2

1012-3

1012-4



1013-1

1013-2

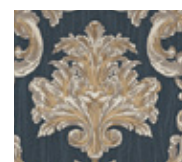
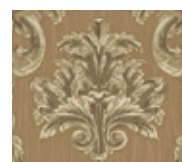
1013-3

1013-5

1013 SERIE



6808 SERIE



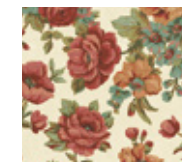
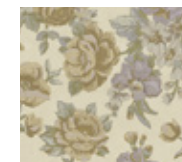
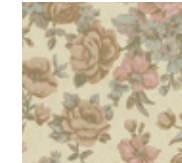
6808-1

6808-3

6808-4

6808-5

6808-6



5806-1

5806-2

5806-3

5806-5

5806 SERIE



1002 SERIE



1002-2



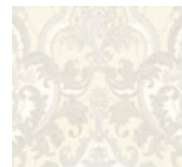
1002-4



1002-5



1002-6



1002-7

6802 SERIE



6802-1



6802-2



6802-3

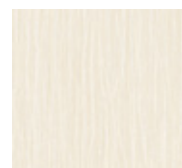


6802-4



6802-5

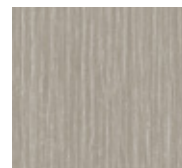
6807 SERIE



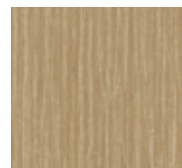
6807-1



6807-2



6807-3



6807-4



6807-5



6807-6

1003 SERIE



1003-1



1003-2



1003-3



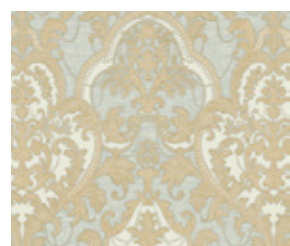
1003-4



1003-5

# EPHES

1.06 M X 10M / NON-WOVEN BACK / PATTERN



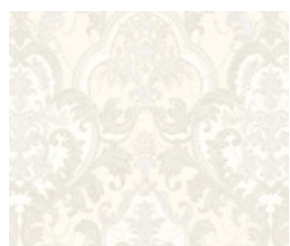
1002-2



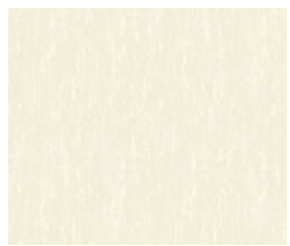
1002-5



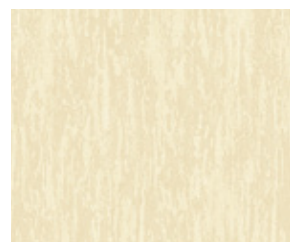
1002-6



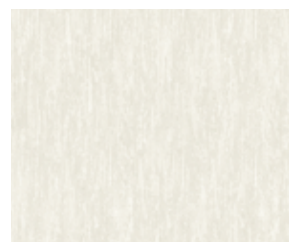
1002-7



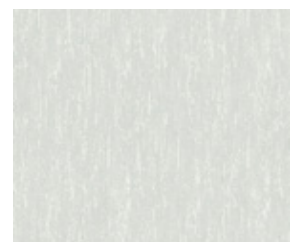
1003-1



1003-2



1003-3



1003-4



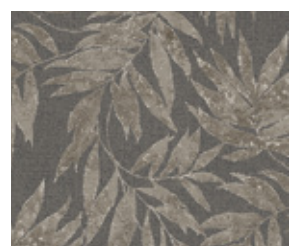
1012-1



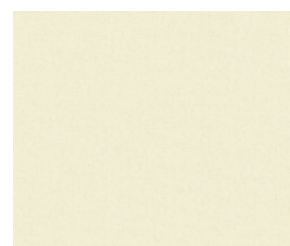
1012-2



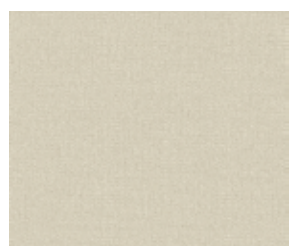
1012-3



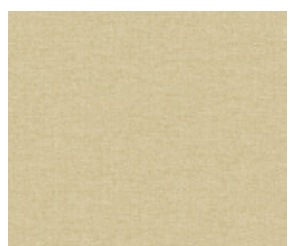
1012-4



1013-1



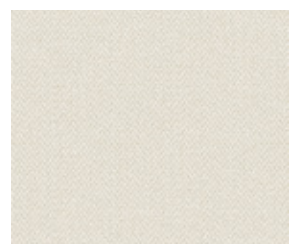
1013-2



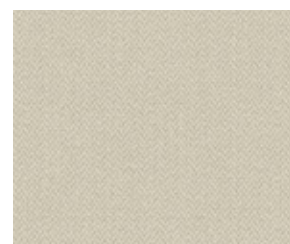
1013-3



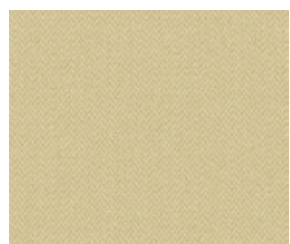
1013-5



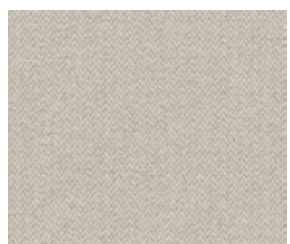
1014-1



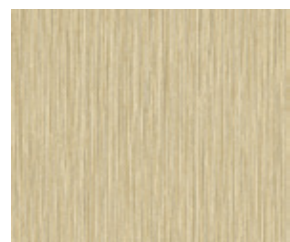
1014-2



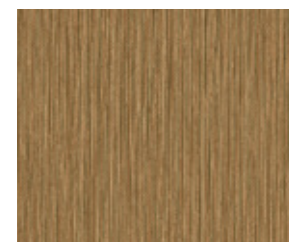
1014-3



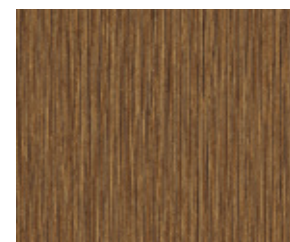
1014-5



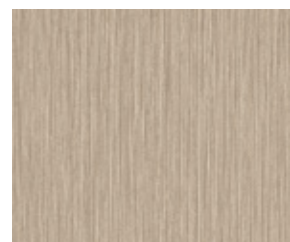
5801-2



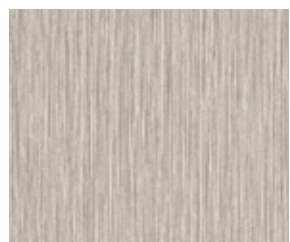
5801-4



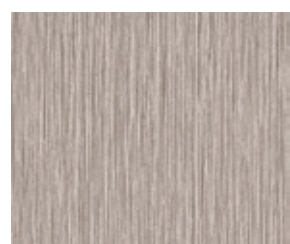
5801-5



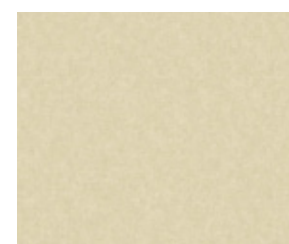
5801-6



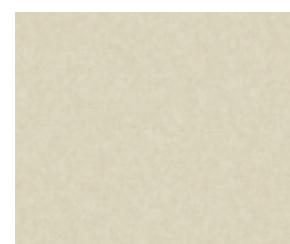
5801-7



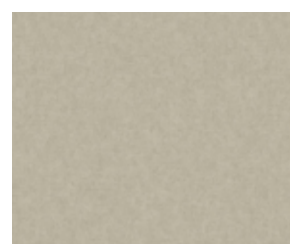
5801-8



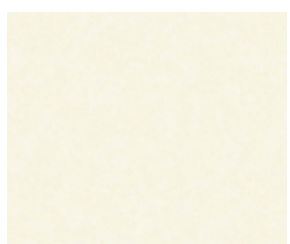
5805-1



5805-2



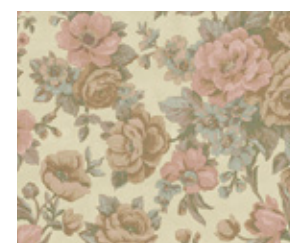
5805-3



5805-5



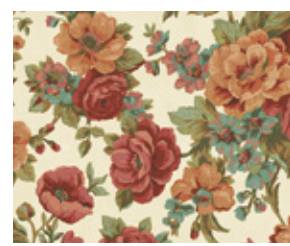
5806-1



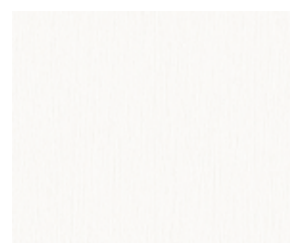
5806-2



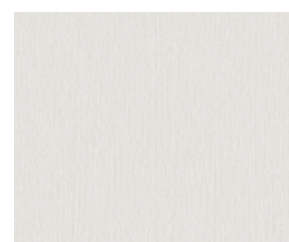
5806-3



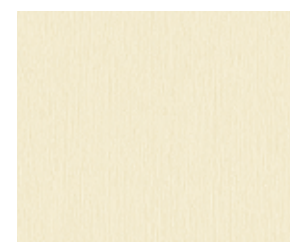
5806-5



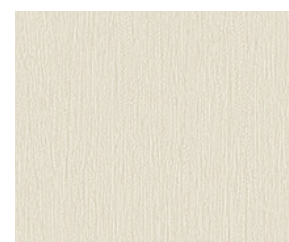
6801-1



6801-2



6801-3



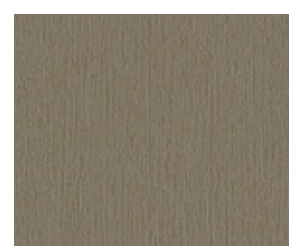
6801-4



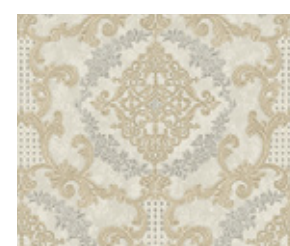
6801-6



6801-7



6801-8



6802-1



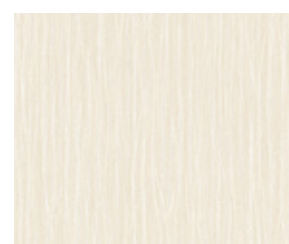
6802-2



6802-4



6802-5



6807-1



6807-3



6807-4



6807-6



6808-1



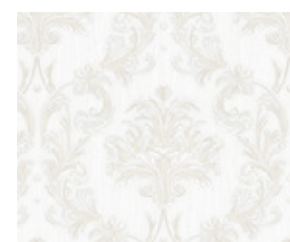
6808-3



6808-4



6808-5



6808-6

TR EPHES DESEN / RENK : 12/54  
 EN EPHES PATTERN / COLOUR : 12/54  
 RU EPHES ДИЗАЙН / ЦВЕТ : 12/54